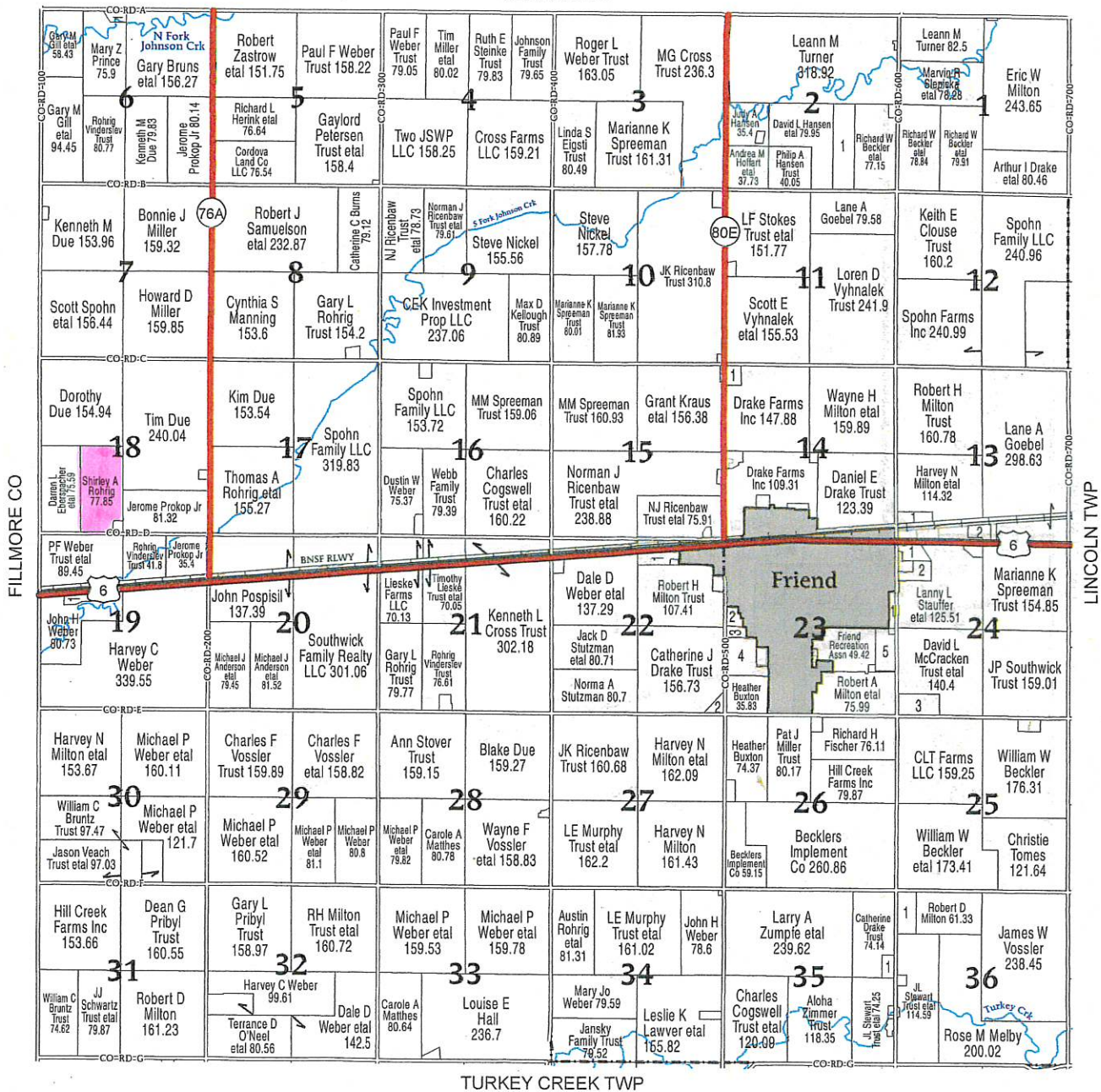


(Landowners)  
SEWARD CO



**FRIEND TOWNSHIP**

<b>SECTION 2</b>	1 HANSEN, NORMAN L ETAL	39.95
<b>SECTION 6</b>	1 SONGSTER, KEVIN ETAL	5.46
<b>SECTION 13</b>	1 HRW FARMING	8.4
	2 FARMERS UNION CO-OP CO INC	6.57

<b>SECTION 14</b>	1 EIGSTI TRUST, LINDA S	6.88
<b>SECTION 19</b>	1 WEBER, DENNIS D ETAL	6.37
<b>SECTION 22</b>	1 FRIEND DEV GROUP INC	10.88
	2 WELLS, CHRISTOPHER R ETAL	5.59

<b>SECTION 23</b>	1 SPOHN FAMILY LLC	6.21
	2 SWANSON, STEINARD E ETAL	6.83
	3 COBRASKA HOLDINGS LLC	5.09
	4 STUTZMAN, DAVID H ETAL	28.18
	5 BROWN, HAROLD D ETAL	18.33
<b>SECTION 24</b>	1 LIGHT JET PROP LLC	9.67
	2 RASPLICKA, DAVID A ETAL	10.4
	3 CITY OF FRIEND	19.96

<b>SECTION 35</b>	1 SCHRUNK, ROY T	6.36
<b>SECTION 36</b>	1 KIRCHHOFF, JUSTIN ETAL	18.39

